



# NPF HOSPITALITY PARK MURREE



# LUXURY GATED VILLAS

[WWW.NPF.ORG.PK](http://WWW.NPF.ORG.PK)



# NPF HOSPITALITY PARK

MURREE



## NPF (NATIONAL POLICE FOUNDATION)

The National Police Foundation (NPF), established in 1975, is a trust dedicated to supporting the welfare of police personnel and their families in Pakistan, it offers a diverse range of services, including financial assistance, housing solutions, medical aid, and educational opportunities. NPF operates multiple projects, such as the E-11 and O-9 housing schemes, merit-based scholarships, and integrated healthcare services, ensuring better living standards for the law enforcement community. To promote self-sufficiency, NPF has also ventured into agri. businesses, including pure honey production and mushroom farming, creating sustainable income sources for police families. Additionally, the foundation runs IT business and planning initiatives, security services, and vocational training programs to empower individuals with career opportunities. With a focus on long-term welfare, NPF continues to expand its services, providing quality education, modern residential facilities, and financial aid. Through these efforts, NPF remains committed to enhancing the well-being and future security of Pakistan's police force and their loved ones.

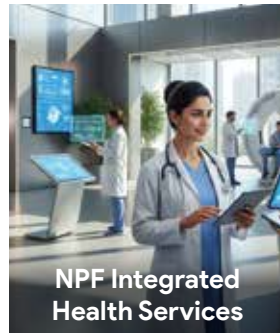
# NPF PROJECTS



NPF Agri Business



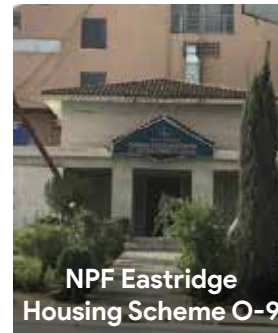
NPF Hamara Ghar



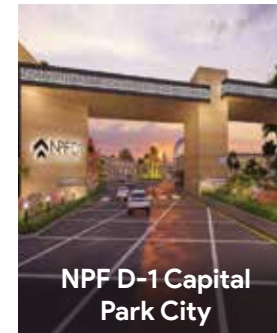
NPF Integrated  
Health Services



NPF  
Financial Assistance



NPF Eastridge  
Housing Scheme O-9



NPF D-1 Capital  
Park City



NPF Housing Scheme  
E-11



NPF CIGHU Agro  
Farm Houses



NPF IT & Business  
Planning



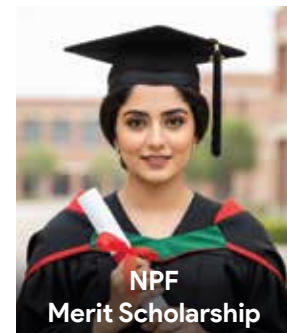
NPF  
Security Services



NPF  
Business Hub



NPF  
Education System



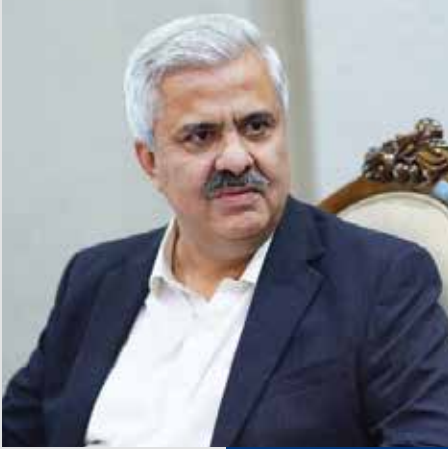
NPF  
Merit Scholarship





**Syed Mohsin Raza Naqvi**  
Federal Minister for Interior & Narcotics Control

It gives me immense pleasure to convey my appreciation for the role being played by the National Police Foundation (NPF), an organization working for a noble cause—serving those who dedicate their lives to ensuring the safety, security, and protection of our citizens. The Ministry of Interior remains fully committed to strengthening our institutions, especially those involved in the welfare and capacity building of our law enforcement agencies. In this regard, the National Police Foundation holds a unique position as it extends vital support and welfare services to the brave men and women who serve our nation with courage and dedication. We are determined to enhance the efficiency and outreach of the Foundation and ensure that it continues to deliver quality services in line with the expectations of our police personnel and their families. The Ministry of Interior stands ready to extend all possible support to the Foundation in its mission. I assure you that any request or challenge faced by the NPF will be taken up by my office with utmost priority until a workable and effective solution is found. Together, we shall continue to build stronger institutions that uphold justice, security, and the welfare of those who serve our country.



**Capt (R) Muhammad Khurram Agha**  
Federal Secretary of Interior

It is indeed heartening to witness the commendable welfare initiatives and progressive development projects being carried out by the National Police Foundation. The Foundation's commitment to supporting those who protect the lives and properties of our citizens is deeply appreciated. I extend my best wishes to the National Police Foundation for its continued success and growth in the future. The Ministry of Interior is fully committed to the operationalizing and strengthening of the National Police Foundation as a key welfare and support institution for our law enforcement agencies.

I assure that the foundation would be provided immense support & facilitation for all its projects today and in the future. The Ministry of Interior stands firmly behind NPF in its mission to serve those who serve the nation.



**Syed Ali Nasir Rizvi PSP**  
Visionary, Managing Director NPF  
Inspector General of Police, Islamabad

The National Police Foundation (NPF) has been steadfast in its mission its establishment in 1975. As an organization dedicated to welfare and to serve and uplift the lives of police personnel and their families since development, we have continuously expanded our services to ensure financial security, quality education, modern housing, and accessible healthcare for our community. Our housing schemes in E-11 and O-9 along with new residential projects like NPF Hamara Ghar and D Capital Park City, reflect our commitment to providing affordable and secure living solutions.

Moreover, our initiatives in agri-business, business planning, and vocational training aim to create sustainable economic opportunities for police families. Looking ahead, NPF envisions further expansion in education, technology-driven business models, and enhanced security services. With innovation and dedication, we strive to build a stronger, more prosperous future for the law enforcement community in Pakistan.



# NPF HOSPITALITY PARK

## MURREE

NPF Hospitality Park, New Murree is a landmark residential and tourism project developed as a joint venture between the National Police Foundation (NPF) and Hospitality Park (Pvt) Ltd. Located on main Ban Karor Road, this scenic site is just minutes away from the proposed Murree District Headquarters and Tourist Highway, and has been officially declared a New Tourist Destination by the Government of Pakistan.

The project offers a range of thoughtfully designed living spaces including 5 Marla Domes, 5 Marla, 12 Marla, and 1 Kanal double-storey villas. Surrounded by lush forest and mountain views, the location is ideal for those seeking a peaceful second home or a high-demand rental property in a growing tourist zone. With 100% owned land and complete legal transparency, NPF Hospitality Park combines the trust of a Government-backed foundation with the development expertise of the private sector. The villas are crafted with modern aesthetics and functional design, making them perfect for both personal use and income generating short stays.

This project offers a rare opportunity to invest in a secure, serene, and fast developing destination, where nature meets comfort, and tourism meets real estate potential.





# WHY CHOOSE US

## **Backed by National Police Foundation (NPF)**

A Government-affiliated institution ensures project security and trust Safe, credible, and officially recognized development.

## **Joint Venture with Reputed Private Developer**

Delivered multiple successful Real Estate Hospitality Projects. Management has 20+ years of Development and construction expertise.

## **Prime Location on Main Ban Karor Road New Murree**

Minutes from Murree's tourist highway, purposed district headquarters and top destinations Adjcent Global IT Hospitality Park New Murree.

## **Declared Government Tourist destination**

Located in the newly declared tourist belt of New Murree High future potential for tourism and property appreciation.

## **Peaceful, Scenic, and Natural Living**

Surrounded by forest, mountains, and fresh air Ideal for health, relaxation, and mental well-being.

## **Unique Dome Homes**

Eco style architecture perfect for vacation or short stays Attractive option for tourists seeking unique experiences.

## **Modern Double-Story Villas (5, 12, 20 Marla)**

Family friendly layouts with spacious design Ideal as second homes, retirement homes, or Guest houses.

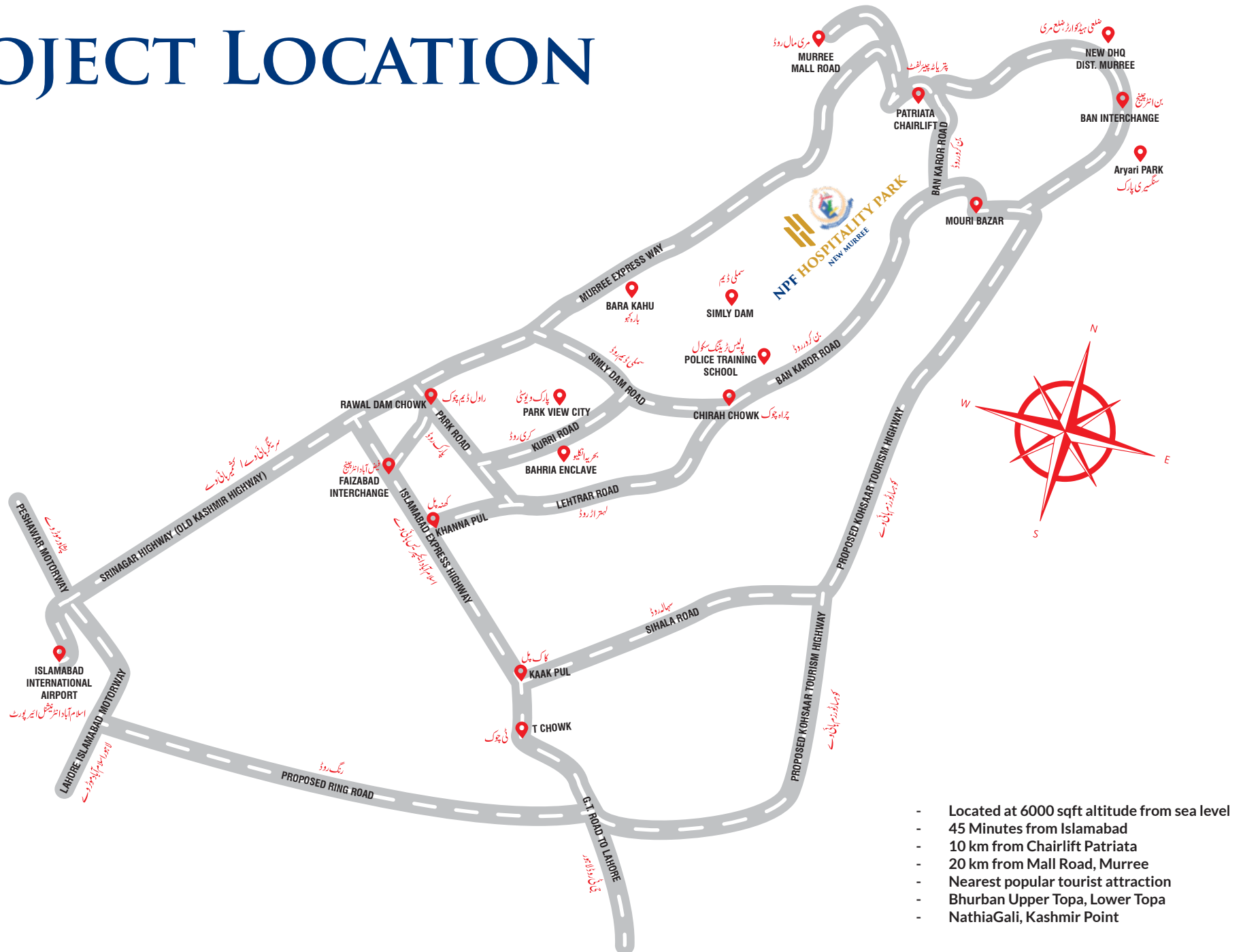
## **High Rental Income Potential**

Growing tourist footfall creates Airbnb style income opportunities Villas & domes in high demand for rental. Strategic Govt. & tourism development drives land value.

## **Flexible Use: Live, Rent, Resell, or Retire**

Personal vacation home, Rental income property, Family inheritance or long term asset.

# PROJECT LOCATION



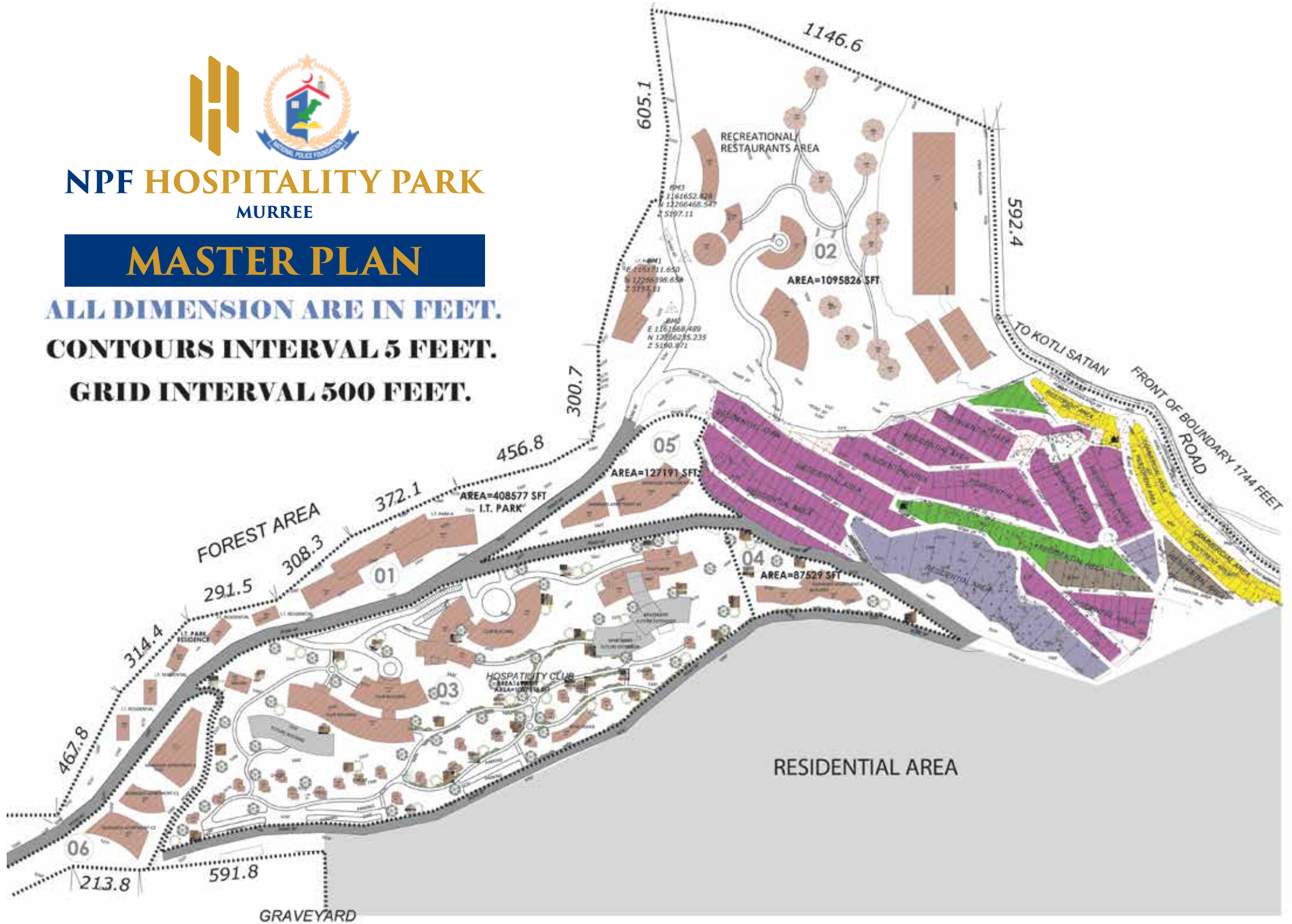
- Located at 6000 sqft altitude from sea level
- 45 Minutes from Islamabad
- 10 km from Chairlift Patriata
- 20 km from Mall Road, Murree
- Nearest popular tourist attraction
- Bhurban Upper Topa, Lower Topa
- NathiaGali, Kashmir Point



# NPF HOSPITALITY PARK MURREE

## MASTER PLAN

ALL DIMENSION ARE IN FEET.  
CONTOURS INTERVAL 5 FEET.  
GRID INTERVAL 500 FEET.





# DOME (5 MARLA)

COVERED AREA (800 SQFT)

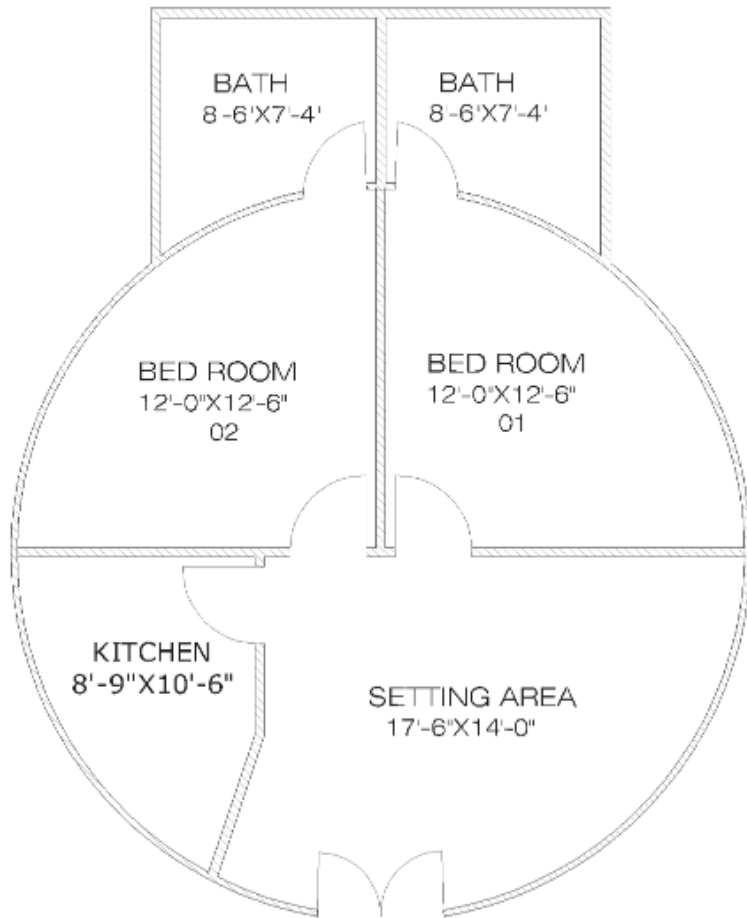
Total Cost	Booking	Confirmation	Possession	36 Monthly Installment	12 Quarterly Installment
11,400,000	1,140,000	2,280,000	1,710,000	190,000	570,000

## FOR NPF MEMBERS

Total Cost	Booking	Confirmation	Possession	36 Monthly Installment	12 Quarterly Installment
9,900,000	990,000	1,485,000	1,485,000	165,000	495,000



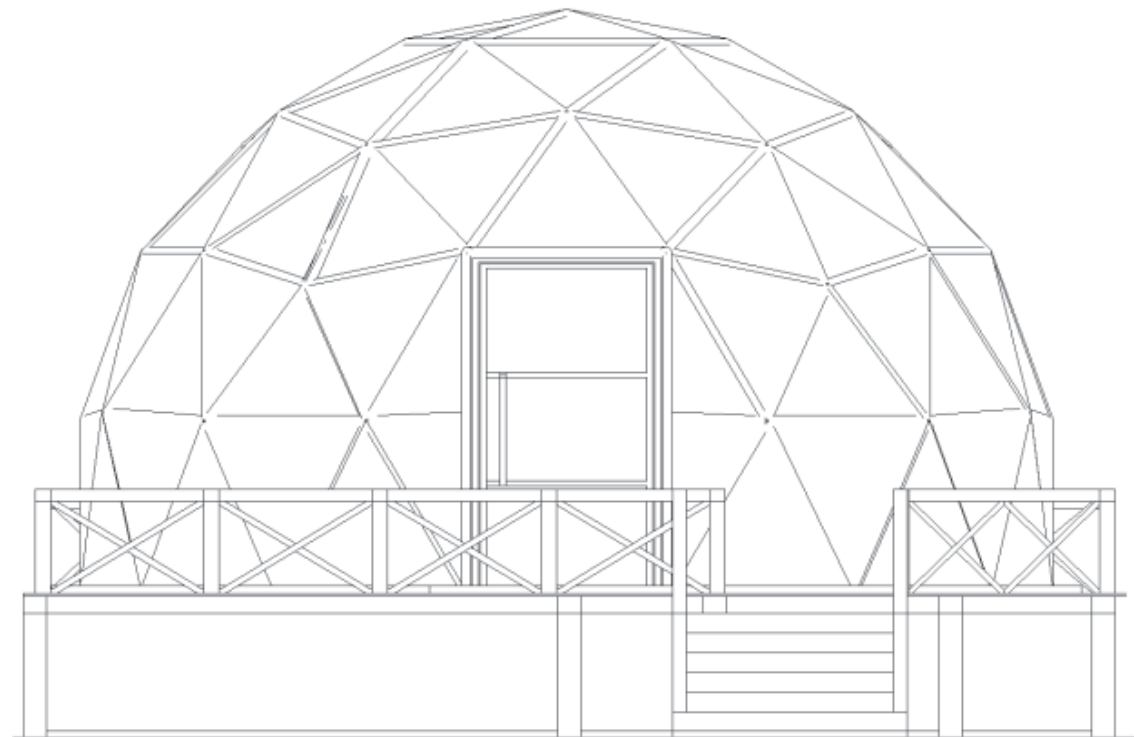
# LAYOUT PLAN



## **DOME GROUND FLOOR PLAN**

DOME AREA=660 SFT

BATH ROOM AREA=140 SFT



**ELEVATION**



# DOUBLE STOREY VILLAS

## (5 MARLA) COVERED AREA (1250 SQFT)

Total Cost	Booking	Confirmation	Possession	36 Monthly Installment	12 Quarterly Installment
15,000,000	1,500,000	2,250,000	2,250,000	250,000	750,000

### FOR NPF MEMBERS

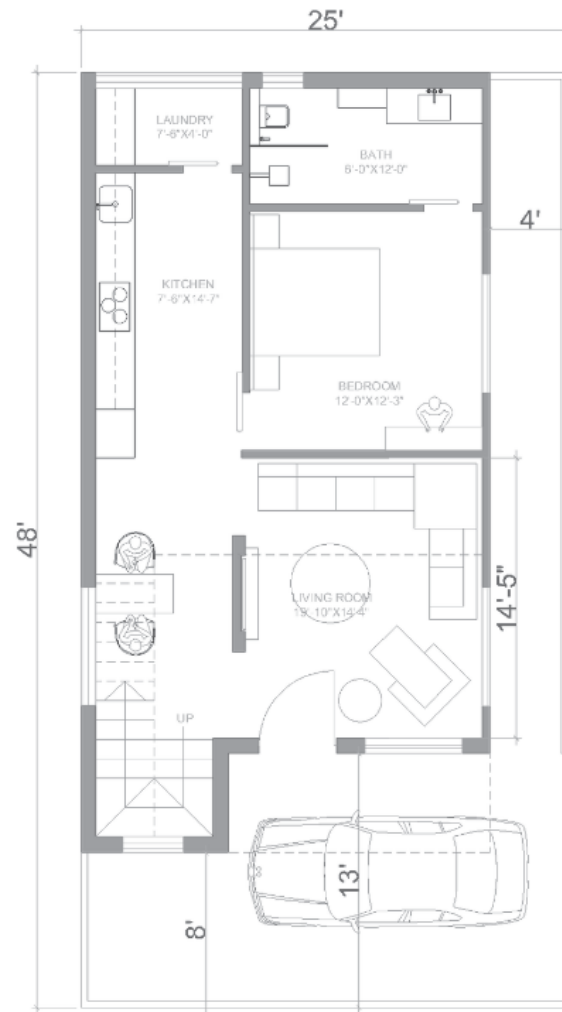
Total Cost	Booking	Confirmation	Possession	36 Monthly Installment	12 Quarterly Installment
12,500,000	1,250,000	1,250,000	1,875,000	208,334	625,000



# LAYOUT PLAN

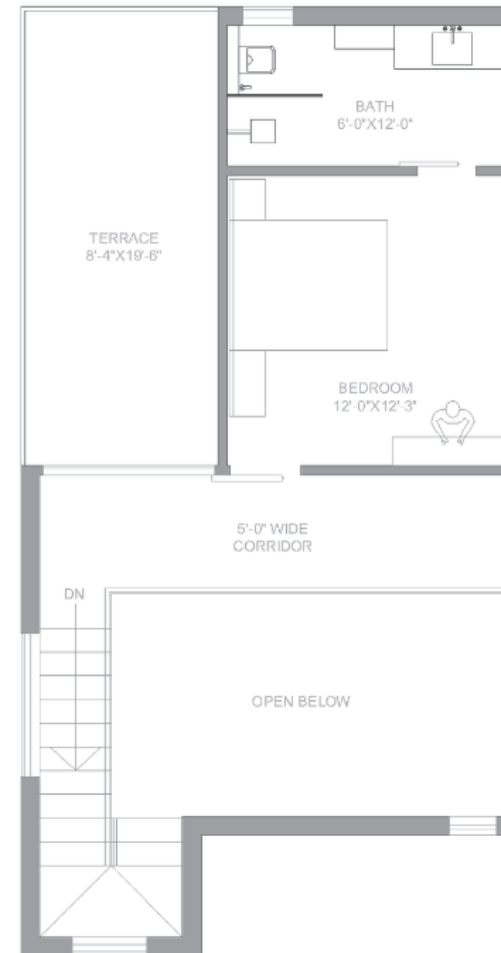


**NPF HOSPITALITY PARK**  
MURREE



**GROUND FLOOR PLAN**

**G.F COVERED AREA : 772 FT**  
**G.F OPEN AREA : 428 FT**



**MEZZANINE FLOOR PLAN**

**F.F COVERED AREA+OTB : 613 FT**  
**TERRACE AREA : 160 FT**

# 12 MARLA VILLAS

COVERED AREA (1250 SQFT)

Total Cost	Booking	Confirmation	Possession	36 Monthly Installment	12 Quarterly Installment
29,000,000	2,900,000	4,350,000	4,350,000	483,335	1,450,000

## FOR NPF MEMBERS

Total Cost	Booking	Confirmation	Possession	36 Monthly Installment	12 Quarterly Installment
25,000,000	2,500,000	3,750,000	3,750,000	416,667	1,250,000

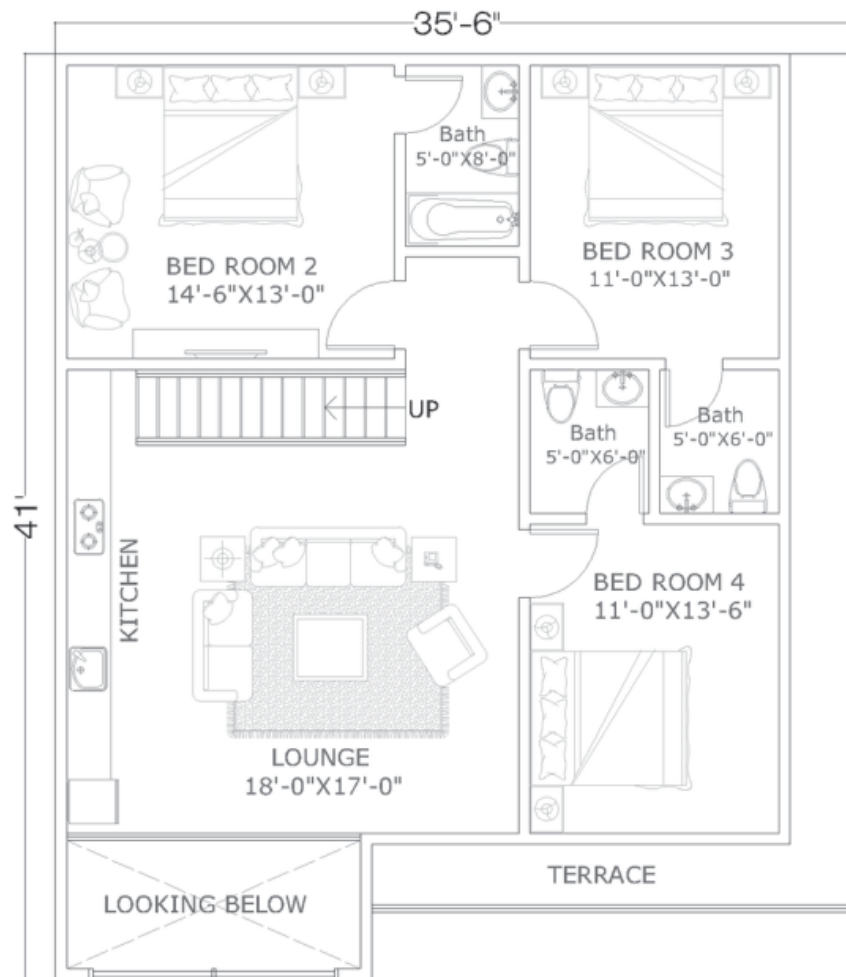




# LAYOUT PLAN

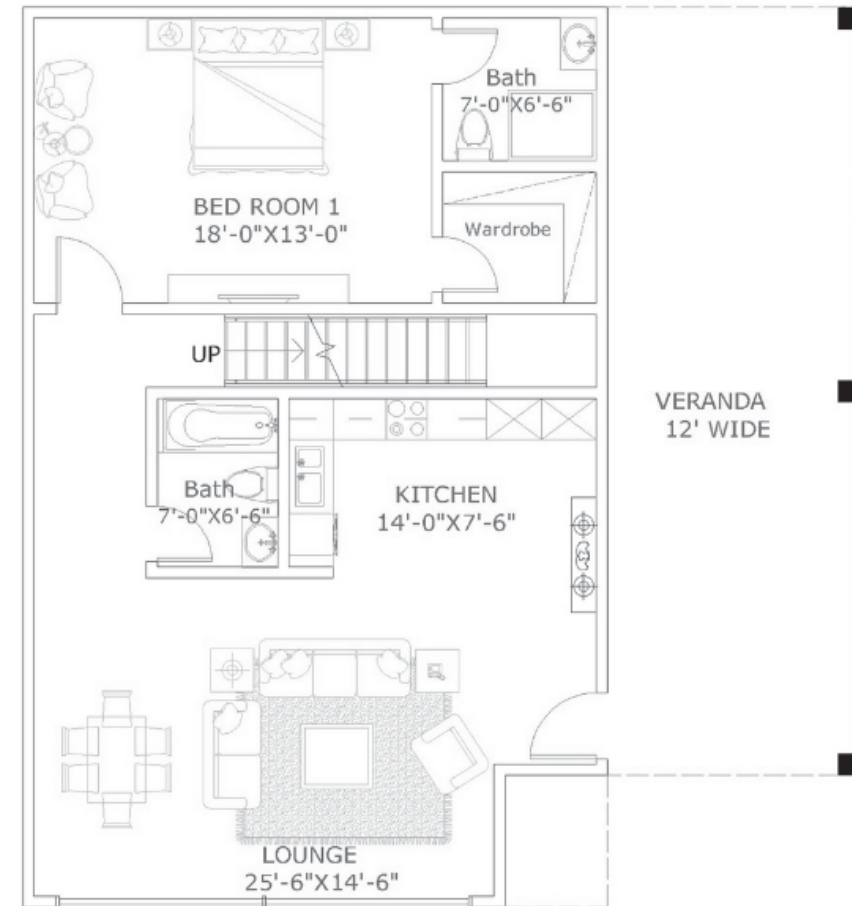


**NPF HOSPITALITY PARK**  
MURREE



**FIRST FLOOR PLAN**

F.F COVERED AREA : 1390 FT



**GROUND FLOOR PLAN**

G.F COVERED AREA : 1062 FT  
VERANDA COVERED AREA : 429FT

# 1 KANAL VILLAS

COVERED AREA (4000 SQFT)

Total Cost	Booking	Confirmation	Possession	36 Monthly Installment	12 Quarterly Installment
42,000,000	4,200,000	6,300,000	6,300,000	700,000	2,100,000

## FOR NPF MEMBERS

Total Cost	Booking	Confirmation	Possession	36 Monthly Installment	12 Quarterly Installment
40,000,000	4,000,000	6,000,000	6,000,000	666,667	2,000,000







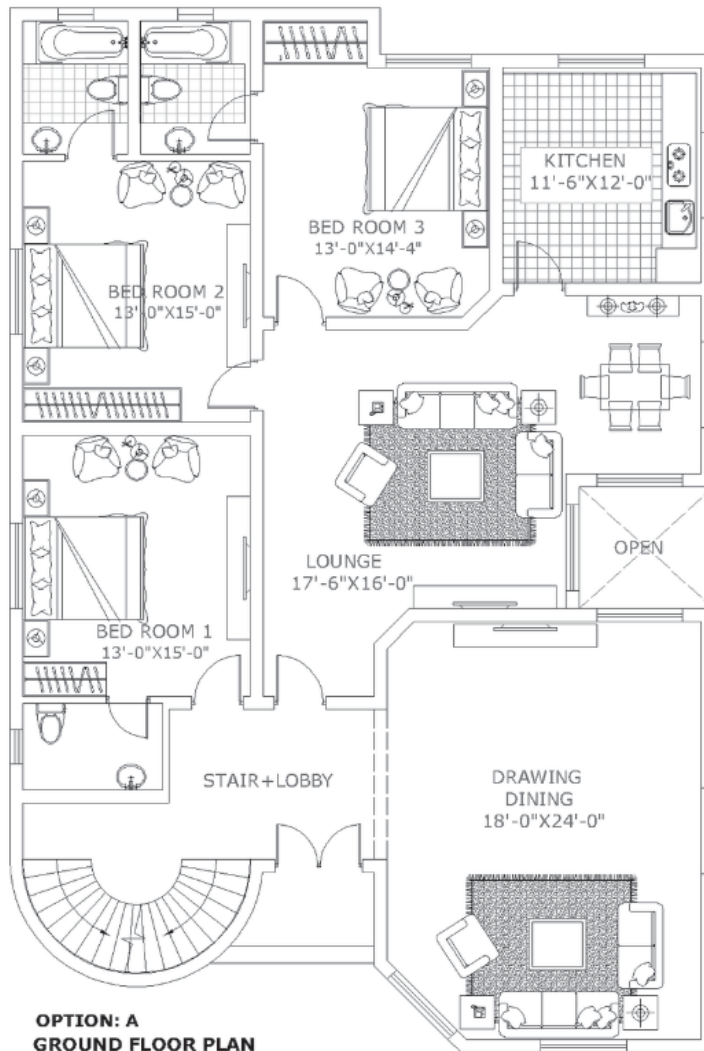
**NPF HOSPITALITY PARK**  
MURREE

# LAYOUT PLAN

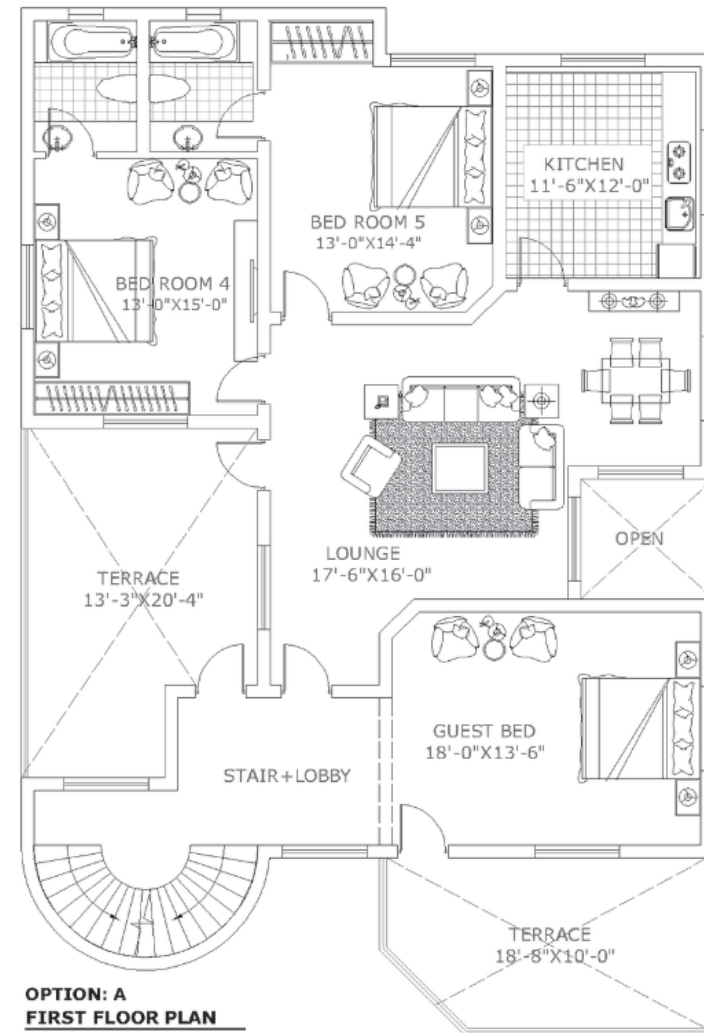
## OPTION A



**NPF HOSPITALITY PARK**  
MURREE



G.F COVERED AREA : 2220 FT



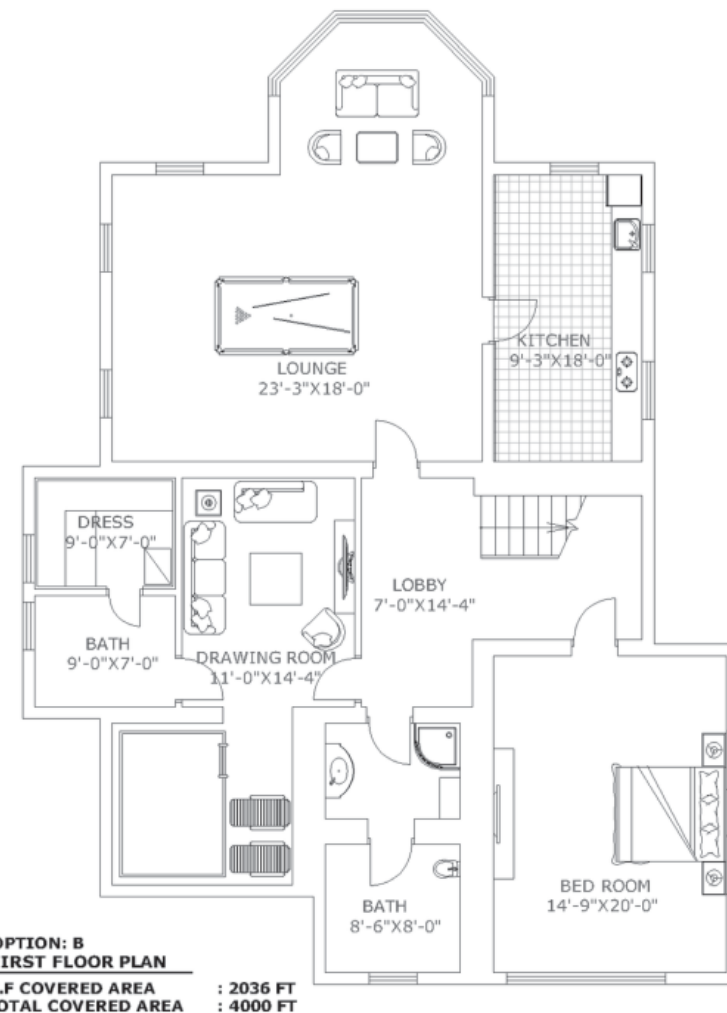
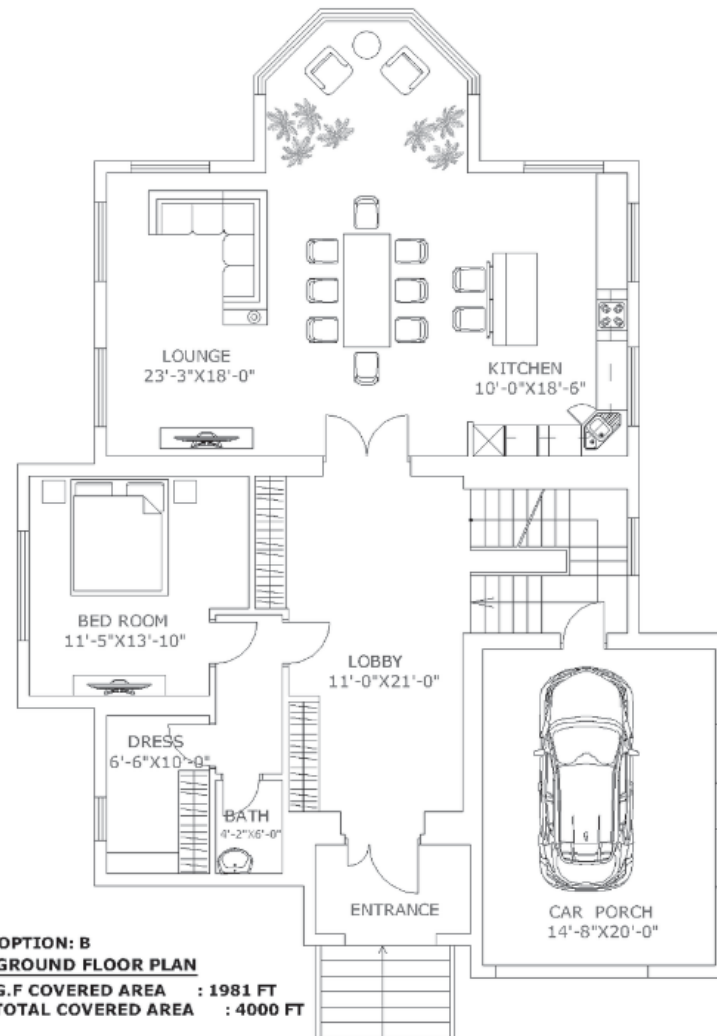
F.F COVERED AREA : 1779 FT

# LAYOUT PLAN

## OPTION B



**NPF HOSPITALITY PARK**  
MURREE





# AMENITIES



**Mosque**



**Gated Society**



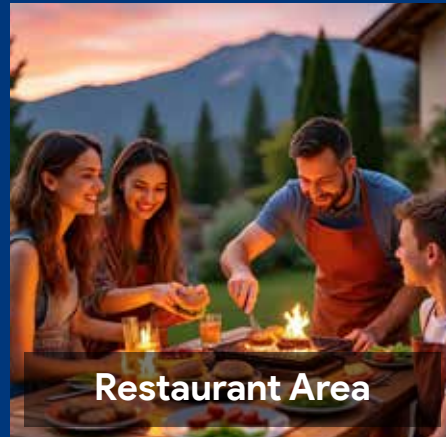
**24/7 Security**



**Hiking Trails**



**Green Views**



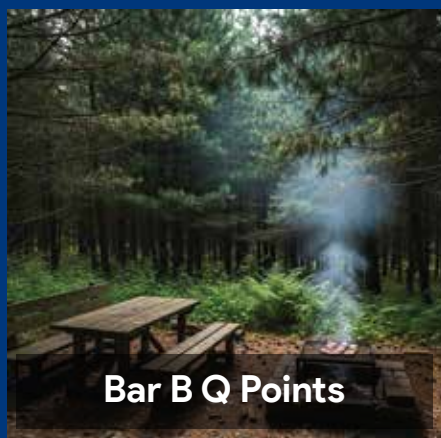
**Restaurant Area**



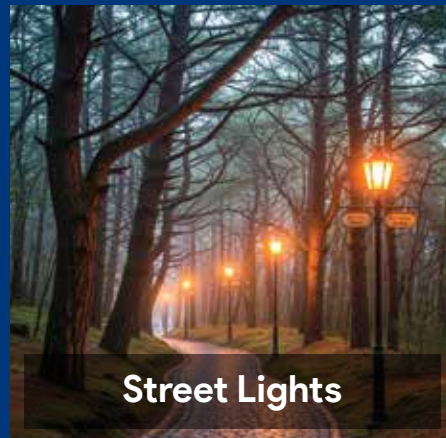
**View Points**



**Concrete Roads**



**Bar B Q Points**



**Street Lights**

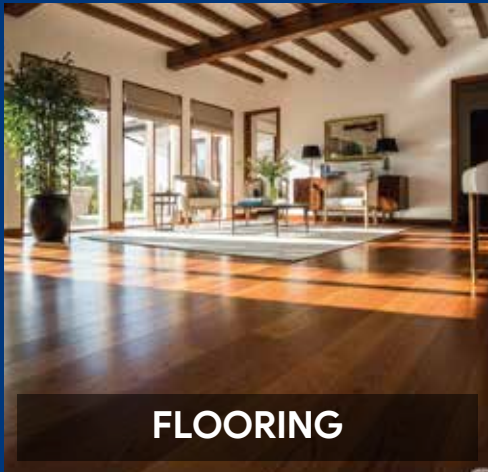


**Safe Play Areas for Kids**



**Recreational Clubs**





## FLOORING

Elegant flooring in a villa can be a combination of polished marble and rich hardwood, creating a sense of luxury and sophistication.



## WALL FINISHING

Venetian plaster for a luxurious, textured look or with silk wallpaper for a soft and opulent feel.



## SANITARY

Combining modern design with exquisite craftsmanship to create a luxurious and serene space.



## PLUMBING

A hidden symphony of design and function, where every fixture is a masterpiece of precision and style.



## ELECTRIC

Elegant and sophisticated atmosphere through concealed fixtures, smart controls, and bespoke installations that enhance both aesthetics and functionality.



## DOORS & WINDOWS

Refined design, seamlessly blending security with sophisticated aesthetics.



## KITCHEN

A harmonious blend of form and function, a kitchen's elegance is in the details



## SAFETY

Fire detection and suppression systems, secure entry points, and an integrated security alarm to protect



# HOW TO BOOK...



**Send Us Inquiry @**  
NPF Head Office Islamabad



We will send you  
**Application Form**  
with Brouchers



**Choose Your**  
Villa Number With Category



**Send Booking Amount**  
Pay Order Back to  
NPF Head Office Islamabad

**Note:** For More Details & Consultations Please Call Our Helpline





# NPF HOSPITALITY PARK

## MURREE

### NATIONAL POLICE FOUNDATION ( NPF)

Head Office: NPF Plaza, G-10/4, Islamabad, Pakistan

Phone: +92-51-2350100 / 2350158

Email: [prd@npf.org.pk](mailto:prd@npf.org.pk) | Website: [www.npf.org.pk](http://www.npf.org.pk)

